

# Genetic Analysis of Stress Hormone Levels Affecting Egg Production Capabilities in Chickens \*

A. Adler  
*NCSSM Online*  
*North Carolina School of Science and Mathematics*  
*Durham, North Carolina*

January 16, 2017

**Abstract:** Stress hormones in chickens can affect behavioral and physical traits, including egg production in hens. This paper makes use of genomic and statistical tools to determine quantitative trait loci (QTL) in chicken DNA that code for the production of three stress hormones. This was done by creating two models: first obtaining QTL data, performing multiple genetic mainscaans, confidence interval graphs, and effect plots, and later correlating the results with an experiment model of egg production percent for two test groups. It was found that the production of Aldosterone is coded significantly on chromosome 5, DHEA on chromosomes 4 and 21, and Corticosterone on chromosomes 3 and 7. It has also been concluded that Corticosterone levels correlate with specific genotypes at particular loci, and that Corticosterone plays a significant role in a chicken's ability to lay eggs. Using the findings determined by this paper, it is possible to provide geneticists and poultry-owners with valuable information concerning the production of stress hormones and how it can affect egg-laying capabilities.

**Key words:** Chickens, *Gallus Gallus*, QTL Analysis, Corticosterone, Aldosterone, Dehydroepiandrosterone (DHEA), Stress Hormones, Egg Production

## Introduction

Chickens have been raised and domesticated for years in order to supply owners with fresh eggs on a regular basis. Although it is known that some chicken species are predisposed to producing a greater amount of eggs than others, it is more useful to be able to predict egg production

---

\*Correspondence to: adler18a@ncssm.edu

using genetic and statistical models. These models show the locations where phenotypic traits are coded and can be used for genetic engineering and analysis.

Red Junglefowl Chickens, *Gallus Gallus*, are considered the ancestors of today's domesticated chickens. Since their domestication around 5000 years ago, these chickens have dispersed and live all over the world[1]. Subspecies of the Red Junglefowl and other chicken breeds are used by humans worldwide for their valuable source of meat and production of edible eggs. Many factors can affect a chicken's ability to lay eggs, including habitat, nutrition, and stress factors. Examples of the stressors chickens face include extreme temperature, lack of food, and predation[2]. In response to these stress factors, chickens produce stress hormones, which are secreted from the adrenal cortex[5]. It is possible to measure these levels of stress hormones, making it feasible to perform genomic studies on these stress hormones in chickens. Using a genetic QTL analysis of chicken DNA data, it is possible to see the specific locations on the chickens' chromosomes that code for production of various hormones.

The term "QTL" is used throughout this paper to refer to quantitative trait loci, genetic locations on an organism's DNA that have been statistically proven to have a large influence over a physical trait, or phenotype[7]. In doing this type of research, it is necessary to understand that organisms have genetic information coded on chromosomes, and genes make up proteins, which code for various phenotypes. In order to study these QTL, data must first be created and mapped using computational models. To create the data, a sample size of one type of organism (typically a few hundred) is selected for study. To produce the best results, this sample is often

comprised of phenotypically diverse individuals of the same species[7]. Next, phenotypes such as size, and in the case of this paper, hormone levels, are quantitatively measured for each individual. Blood is then extracted from each individual and DNA is separated from other materials, often by the use of a centrifuge. The extracted genetic material is finally run through various computers and DNA sequencers to create the QTL data. Genetic markers are used in this field of study to measure chromosome length (in centimorgans) and to estimate where QTL might be located[7].

The terms "loci" and "LOD scores" are also technical terms used frequently in this paper. Loci are the plural form for locus, and are used to describe significant genetic locations that have influence over phenotypes[7]. LOD stands for "Logarithm of the Odds" and its score can be used to measure genetic linkage of a loci to a phenotype. In genomic research, a LOD score of 3 or greater is generally considered significant in the coding for traits[7].

Figure 1 shows a diagram of two chromosomes and demonstrates how QTL are located. Pairs of chromosomes are connected by centromeres, the region above the centromere is called the P-arm, and the region below the centromere is called the

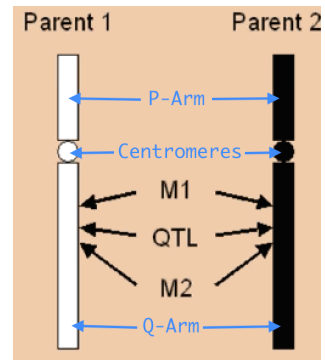


Figure 1: This diagram shows a pair of chromosomes, and suggests how QTL can be found using genetic markers[3].

Q-arm. QTL are located on either arm and are surrounded by one genetic marker on each side, represented by M1 and M2. These markers facilitate the process of finding significant loci and are used in creating the QTL data sets.

Female chickens have the ability to produce edible eggs almost daily, all without male fertilization. Many factors contribute to the efficiency of egg production, including age, breed, and hormone levels. Hormones are produced after chickens are subjected to stressful situations, such as predation, extreme temperatures, infection, or malnutrition. Hormones such as Aldosterone, Dehydroepiandrosterone (DHEA), and Corticosterone can be released and travel throughout the body, triggering multiple problems including decreased reproductive function and egg production[4].

The data obtained for the R/qtl study comes from the paper by Fallahsharoudi[10]. Fallahsharoudi and his team collected data from 232 chickens, determining quantitative phenotypes, collecting and calculating hormone levels, extracting DNA, and using genetic sequencing to analyze DNA.

The data obtained for the Corticosterone experiment Mathematica model is from the paper by Shini[11]. Shini and her team conducted an experiment in which they tested how Corticosterone affects egg production. In doing so, a data set containing egg production percent at age intervals was created.

This paper attempts to locate QTL and predict how certain genes code for hormone production. It also aims to correlate these results with the known fact that stress hormones alter internal processes. This is achieved by using the tools R and Mathematica[6][9]. Using the Haldane mapping method and EM algorithm makes it

easier to achieve these goals. Described in the book by Chen, the Haldane method is statistically useful for two reasons: it takes less time to compute, and it only depends on two markers surrounding a QTL[12]. A publication by Kerr explains that the EM algorithm is useful because it is a "stable and reliable method" for identifying QTL[13]. The Expectation Maximization (EM) algorithm is most useful in multiple-trait, multiple family data sets, like the one used in this study. Both of the above described methods were used extensively in the R/qtl portion of this paper.

Producing the following models has made it evident that computational biology tests and genetic statistics can be used to analyze chicken stress hormone production and possibly predict egg production abilities.

### **Computational Approach**

In order to genetically predict which chickens would be likely to produce more eggs and begin production at a younger age, two models were created using QTL data from Fallahsharoudi and Corticosterone egg-laying data from Shini[10][11]. The first model analyzes quantitative trait loci for three different stress hormones in chickens and was made in the program R with the R/qtl library installed[6][8]. The second model analyzes how increased Corticosterone levels affect egg laying capabilities and was made with Wolfram Mathematica[9].

The necessary data first had to be found to produce a working QTL model. The data used comes from the paper by Fallahsharoudi[10]. This data set contains phenotypic and genotypic information for 232 male and female chickens from the 12<sup>th</sup> generation of a White Leghorn and Red Junglefowl advanced inter-

cross. Along with basic information such as sex, an ID number, and parental grandmother, this data set contains the phenotypes for brain mass, metatarsus length, and amounts of various stress induced hormones, as well as logarithmically transformed values for some of the phenotypes. Although some of the phenotypes in this data set can't be genetically analyzed, there is a total of 79 phenotypes in this data set.

The first steps in this model included clearing previous data and setting the R directory to a designated desktop folder. After first downloading the R/qrtl library, it was loaded into the model[8]. Next, the data was loaded into the R script and information was entered to tell the program that AA represents a homozygous dominant genotype, BB represents a homozygous recessive genotype, AB represents a heterozygous genotype, and a dash (-) represents missing data. The function "jittermap" was then used to move the genetic markers apart slightly so that the results were more reliable. The "summary" and "names" commands printed useful information about the type of cross, number and phenotype names, number of genetic markers, and percentages by genotype. As described in the previous paragraph, these functions describe the data set as having information for 232 individuals, 79 phenotypes, and 739 genetic markers for 29 chromosomes.

The next three commands in the code output graphs that suggest the reliability of the data. Est.rf displays a graph of recombination fractions with LOD scores. Plot.map displays a genetic map that contains all 29 chromosomes, their lengths in centimorgans, and the locations of all 739 markers. Plot.missing shows available data in white and missing data in black.

The next portion of this model renames vari-

ables within this data set for later analysis and uses the hist() command to produce histograms for the data of three hormone levels (Aldosterone Log, DHEA Log, and Corticosterone Response).

The final diagnostic used to visualize the reliability of the data was a collection of qq plots that compared theoretical quantities with sample quantities for each of the three chosen phenotypes. In addition to the three list plots, a linear regression line was added to each to more easily see the strength of each correlation.

After performing the initial diagnostic tests, the mainskans could be produced. Before creating mainskans for each of the three hormone phenotypes, a genetic probability map had to be created and genome probability calculations had to be carried out in order to calculate what an ideal scan should look like. For these two tests, the Haldane method and a fixed step width was used[12]. After producing this ideal model, mainskans were created for the traits of Aldosterone, DHEA, and Corticosterone. For each scan, the correct phenotype column was entered, the EM algorithm was used, and the scans were run for 100 permutations[13]. After running each scan, the three mainskans were plotted with confidence thresholds at 67%, 90%, and 95%, as designated by the blue, red, and green lines. After the model finished running and graphing each scan, it also output a text description, showing significant chromosomes, the exact locations, and LOD scores.

The final portion of the R/qrtl model analyzed the Corticosterone response in greater detail. First, two confidence interval plots were created for chromosomes 3 and 7 to show more precise genetic locations that code for Corticosterone production. As in the mainskans, a confidence

threshold of 95% was used to obtain accurate results. The green lines near the bottom of the graphs represent length intervals that likely contain significant loci that code for Corticosterone response. Two effect plots were created for Corticosterone response, one for each of the loci on chromosomes 3 and 7. These two plots show which genotypes at a specific loci tend to correlate with a higher, lower, or medium Corticosterone production amount.

After completing and running the R/qtl model, one additional model was constructed in Mathematica to demonstrate how Corticosterone levels in chickens affect egg-laying abilities[9]. This model first imports the downloaded data set. The data used in this model was found in the paper by Shini[11]. After importing the data, the

model deletes the two header rows and transposes the data so that each column is defined by a variable (age, control egg production percent, and Corticosterone egg production percent). Lastly, this model graphs the two experimental groups as separate lines on the same graph, with age in weeks as the independent variable and egg production percent as the dependent variable.

### Results and Discussion

The graphs produced in the first part of the R/qtl model give basic information about the available genetic data. Shown in figures 2, 3, and 4, these diagnostics include a recombination fraction graph, chromosome map, and missing data graph.

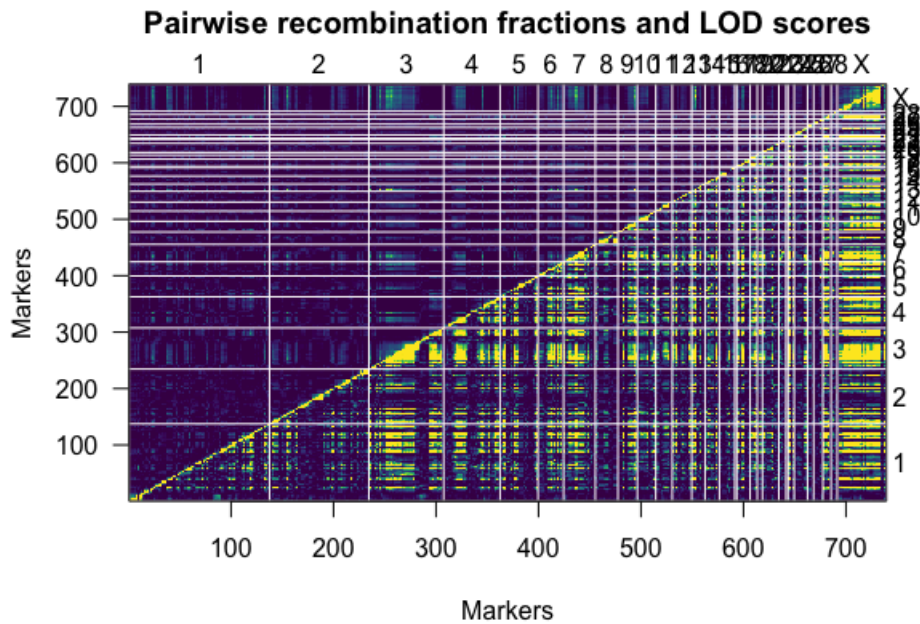


Figure 2: This graph displays the pairwise recombination fractions with LOD scores for each marker on all 29 chromosomes.

### Genetic map

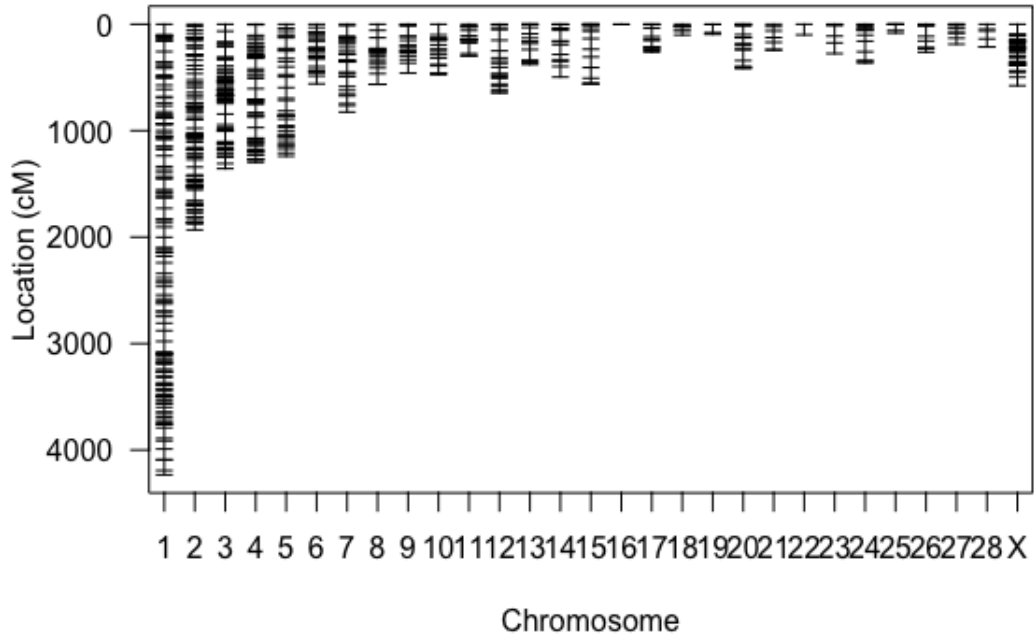


Figure 3: This graph displays the locations of all 739 genetic markers on the chromosomes. Each horizontal line represents a genetic marker and each vertical line represents the length of each chromosome, measured in centimorgans. Chromosome 1 is clearly the longest chromosome, and also seems to have the most genetic markers in this map.

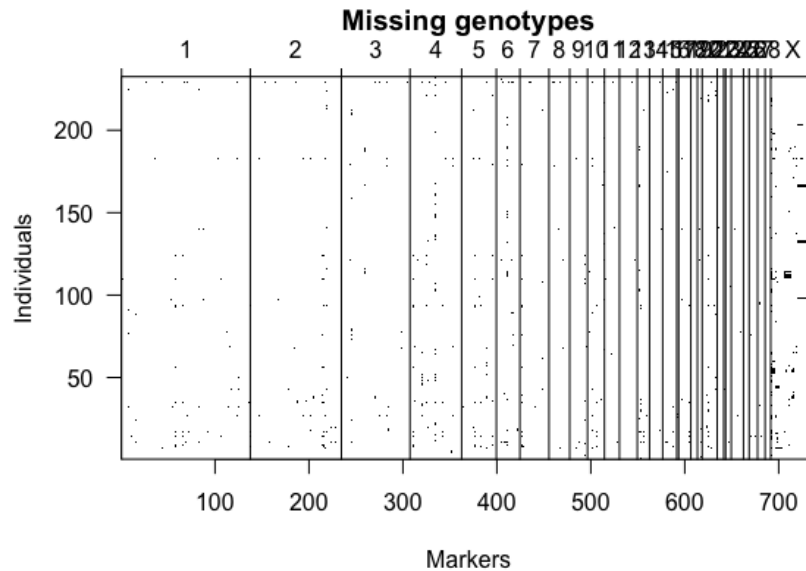


Figure 4: This plot shows available genetic data in white and missing data in black. Because there are only a few black portions in this graph, the data set is almost entirely complete.

The next section of results contains graphs that validate the reliability of the data. These include qq plots and histograms for Aldosterone, DHEA, and Corticosterone Response. These can be seen in figures 5, 6, 7, 8, 9, and 10.

strates a slightly normal distribution, so the results will be moderately reliable.

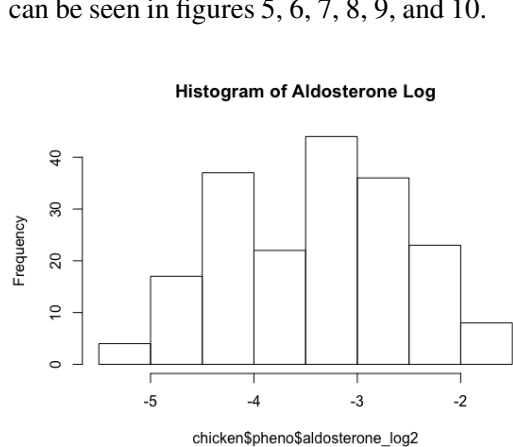


Figure 5: This graph shows a histogram of the Aldosterone values. This histogram demon-

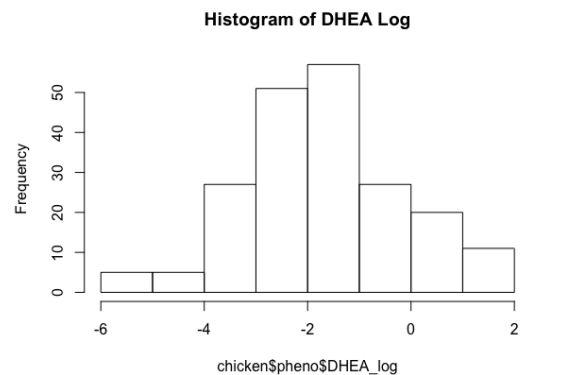


Figure 6: This graph shows a histogram of the DHEA values. This histogram displays a strong normal distribution, so the results will be considerably reliable.

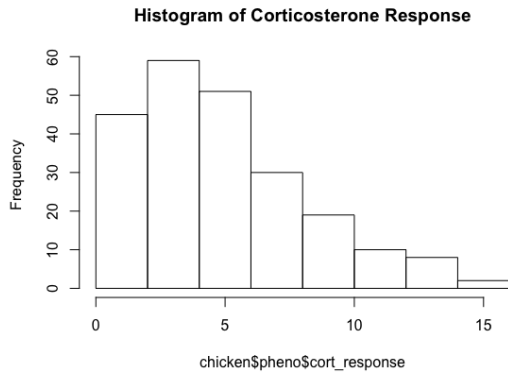


Figure 7: This graph shows a histogram of the Corticosterone values. Although shifted slightly to the left, the values are in a bell-shaped curve, meaning the results will be moderately reliable.

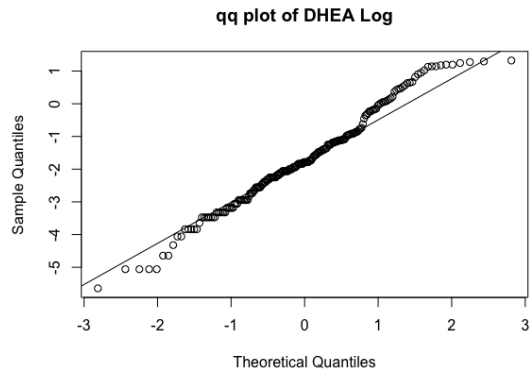


Figure 9: This is a qq plot of theoretical and sample DHEA quantities. The linear regression is almost 45 degrees and the data points have slight variation, which demonstrates near-perfect correlation and strong results.

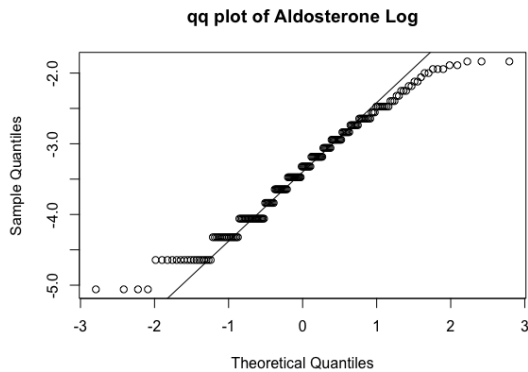


Figure 8: This is a qq plot of theoretical and sample Aldosterone quantities. The linear regression is almost a 45 degree diagonal line and the data points are close to the regression, suggesting a near-perfect correlation and strong results.

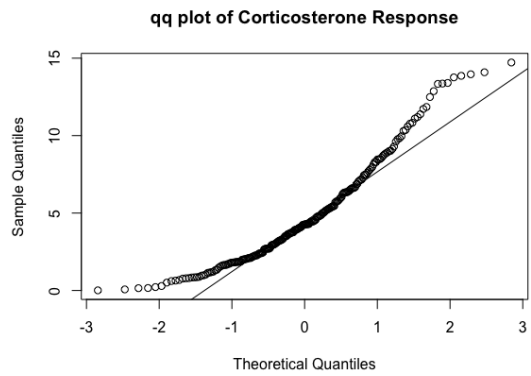


Figure 10: The final qq plot is a graph of theoretical and sample Corticosterone values. This graph shows a strong correlation, suggesting reliable results.

The next portion of the R/qlt model produced three phenotypic mainscans, for Aldosterone level, DHEA level, and Corticosterone level. Figures 11, 12, and 13 show these mainscans with text output embedded. The x-axis displays the locations of each genetic marker, and the y-axis displays LOD scores. High peaks represent high LOD scores, indicating signif-



icant loci that likely contribute to the coding of each trait. Loci with LOD scores greater than 3 can be considered significant and loci with LOD scores greater than the 95% confidence threshold were identified in this paper. Confidence thresholds were included for 67%, 90% and 95% confidence, shown by the blue, red, and green lines in each scan.

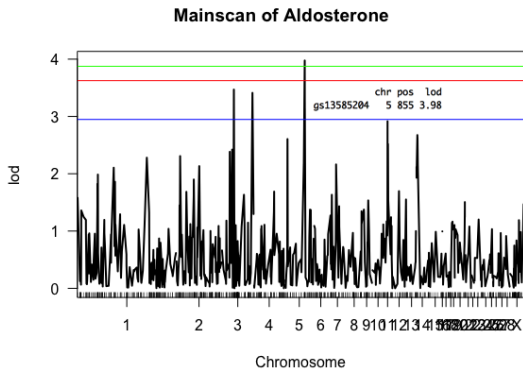


Figure 11: This graph shows an Aldosterone Mainscan. Three high peaks appear to be above a LOD score of 3 and only one appears to be above the 95% threshold. It is easy to visualize this significant locus as being on chromosome 5, and this is verified with the text output, which shows a significant locus on chromosome 5, at a location of 855 centimorgans, and with a LOD score of 3.98.

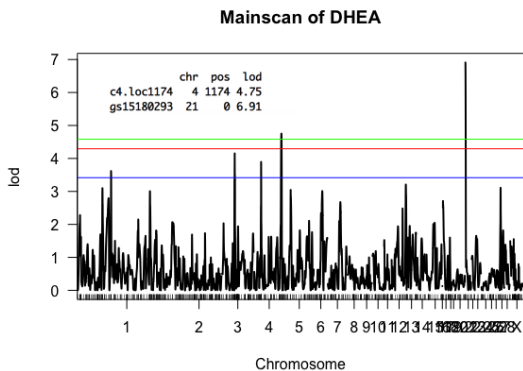


Figure 12: This graph shows a DHEA Mainscan. Multiple high peaks appear to be above a LOD score of 3 and two appear to be above the 95% green threshold line. After visual analysis it seems one very high peak is located near chromosome 21 and one lower peak near chromosome 4. These results are confirmed with the text summary, which suggests two significant loci: one on chromosome 4, at 1174 centimorgans, with a LOD score of 4.75 and one on chromosome 21, near position 0, with a LOD score of 6.91.

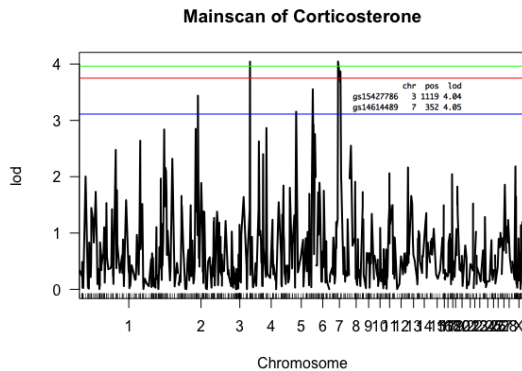


Figure 13: This final mainscan displays the data for Corticosterone. Multiple high peaks appear to be above a LOD score of 3 and two appear to be above the 95% green threshold line. It is easy to visualize these significant loci as being on chromosomes 3 and 7. These results are also verified with the text output, which shows significant loci on chromosome 3, at 1119 centimorgans, with a LOD score of 4.04, and chromosome 7, at 342 centimorgans with a LOD score of 4.05. Because the two LOD scores for these two loci are so similar, it is likely that they both code almost equally for Corticosterone production.

After identifying the two significant loci for Corticosterone production, two confidence in-

interval scans were created. The point of using this type of diagnostic is to localize the individual significant loci of chromosome 3, as seen in figure 14. The second is of loci on chromosome 7 and can be seen in figure 15. The green line near the bottom of each graph represents a range that likely contains the most significant loci on each chromosome.

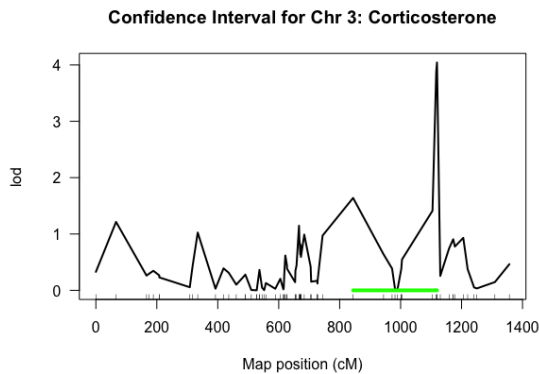


Figure 14: This confidence interval plot shows a significant interval of about 840 to 1120 centimorgans on chromosome 3, as suggested by the green interval line.

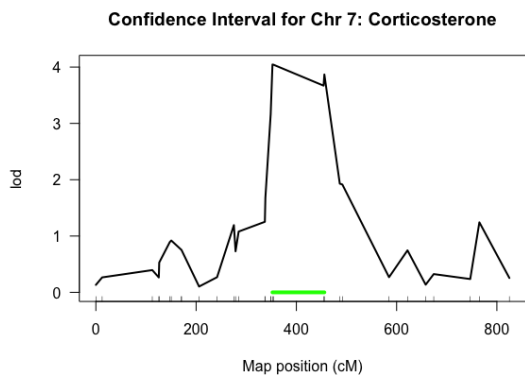


Figure 15: This confidence interval plot shows a significant interval of about 355 to 460 centimorgans on chromosome 7, as suggested by the green interval line.

The final part of the R/atl model produced two effect plots for Corticosterone, visible in figure 16. These graphs show which genotypes at selected loci on two different chromosomes tend to correlate with Corticosterone levels.

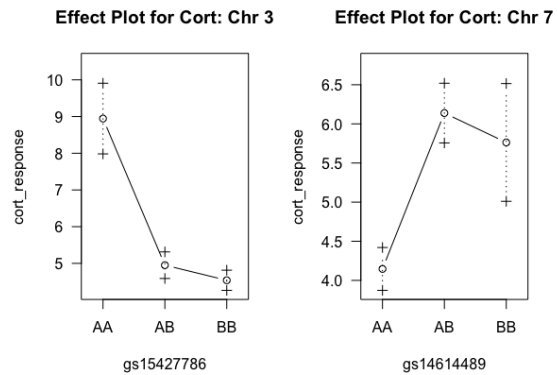


Figure 16: The graph on the left shows an effect plot for Corticosterone on chromosome 3. According to the plot that represents loci near the identified marker on chromosome 3, a homozygous dominant genotype codes for the highest Corticosterone levels, a homozygous recessive genotype codes for the lowest Corticosterone levels, and chickens that are heterozygous at that locus tend to be somewhere in between. The graph on the right shows an effect plot for Corticosterone on chromosome 7. According to the plot that represents loci near the identified marker on chromosome 7, a heterozygous genotype codes for the highest Corticosterone levels, homozygous dominant genotypes code for the lowest Corticosterone levels, and homozygous recessive genotypes code for a medium Corticosterone level.

The Mathematica model produced one graph, showing the relationship between age and egg production for two experimental groups. In the data used, 270 Hy-line brown-layer pullet chickens were studied for egg production, food con-

sumption, and body weight, although only egg production was studied in this paper. The chickens in Shini's experiment were randomly selected and placed in one of three experimental groups[11]. Only two of the experimental groups were studied in the Mathematica model: a control group, and a group that received a Corticosterone solution at ages 7, 11, and 15 weeks. This model represents how stress affects egg production and can be seen in figure 17.

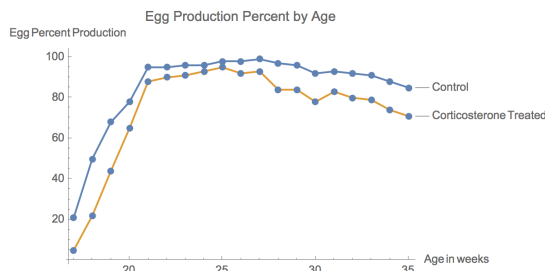


Figure 17: This set of line plots shows how egg production varies over time for two groups: a control group, and a Corticosterone-tested group. The group that consumed additional Corticosterone is represented by the line that is consistently below that of the control. The Corticosterone-tested group took longer to produce eggs, and was also noticeably less efficient when compared to the control group. Chicken age is measured on the x-axis while egg production percent is measured on the y-axis. Each data point represents the average egg production percent for 90 chickens, measured in weekly intervals since 17 weeks.

### Conclusions

After running various diagnostics with the genetic data and comparing those results to the graph of the Corticosterone experiment model, multiple conclusions can be made.

First, after viewing the statistical models for the genetic data (missing data, histograms, qq

plots), it is evident that the data for the three hormone phenotypes is reliable and can be used to make accurate conclusions. This is made clear because the data for the three phenotypes displays normal distribution and strong correlations.

Second, after comparing the genetic Corticosterone results to the results of the experiment mode; while using the understanding that stress hormones affect organisms' health and ability to reproduce, it can be concluded that the significant loci that code for Corticosterone production have some influence over a chicken's ability and efficiency in laying eggs.

In summary, after cross-referencing the previous conclusion with the genetic effect plots, it can be logically stated that chickens who are homozygous dominant on 1119 centimorgans on chromosome 3 and heterozygous on 352 centimorgans on chromosome 7 will likely produce elevated levels of Corticosterone, which will, in turn, likely delay egg production and diminish chickens' egg production efficiency. Likewise, it can be stated that chickens who are homozygous recessive on 1119 centimorgans on chromosome 3 and homozygous dominant on 352 centimorgans on chromosome 7 will likely produced diminished levels of Corticosterone, which can aid in maximizing egg-laying ability.

Although the above-mentioned conclusions are both valid and useful, many improvements can be made to the two models in this paper to make further conclusions. It would be helpful to have publicly-available QTL data for egg production to genetically analyze egg production capabilities both with and without comparing the results to hormone production. It would also be worthwhile to conduct further studies with different stress hormones and test how each affects egg

production differently. A computational chemistry model could be used to analyze hormone structure differences or dissociation constants, and could provide insight as to why different hormones cause different effects.

### Acknowledgements

The author would like to thank Mr. Robert Gottwals for teaching the Introduction to Computational Science Course and providing the necessary knowledge to carry out this project. The author would also like to thank Dr. Dirk-Jan de Koning for his help with finding research data. Lastly, thanks is extended to the North Carolina School of Science and Mathematics for providing access to this class and numerous academic tools.

### References

- [1] Gautier, Zoe. "Gallus gallus (red junglefowl)." Animal Diversity Web. N.p., n.d. Web. 23 Dec. 2016. [http://animaldiversity.org/accounts/Gallus\\_gallus/](http://animaldiversity.org/accounts/Gallus_gallus/).
- [2] J.P. Jacob, H.R. Wilson, R.D. Miles, G. D. Butcher, and F.B. Mather2. "Factors Affecting Egg Production in Backyard Chicken Flocks." EDIS New Publications RSS. Animal Sciences, n.d. Web. 20 Dec. 2016. <http://edis.ifas.ufl.edu/ps029>.
- [3] "Quantitative Trait Locus (QTL) Analysis 2." Plant and Soil Sciences eLibrary. N.p., n.d. Web. 27 Dec. 2016. <http://passel.unl.edu/pages/informationmodule.php?idinformationmodule=1067442598&topicorder=3&maxto=11>.
- [4] Lara, Lucas, and Marcos Rostagno. "Impact of Heat Stress on Poultry Production." *Animals* 3.2 (2013): 356-69. Web
- [5] Virden, W. S., and M. T. Kidd. "Physiological stress in broilers: Ramifications on nutrient digestibility and responses." *The Journal of Applied Poultry Research* 18.2 (2009): 338-47.
- [6] R Core Team (2013). R: A language and environment for statistical computing. R Foundation for Statistical Computing, Vienna, Austria. ISBN 3-900051-07-0, URL <http://www.R-project.org/>.
- [7] Broman, Karl W., and Saunak Sen. A guide to QTL mapping with R/qlt. Dordrecht: Springer, 2009. Print.
- [8] Broman KW, Wu H, Sen S, Churchill GA (2003) R/qlt: QTL mapping in experimental crosses. *Bioinformatics* 19:889-890
- [9] Wolfram Research, Inc., Mathematica, Version 11.0, Champaign, IL (2016).
- [10] Fallahsharoudi, Amir, de Kock, Neil, Johnsson, Martin, Bektic, Lejla, Kumari, S.J, Bergquist, Jonas, Wright, Dominic, and Jensen, Per. "Genetic and Targeted eQTL Mapping Reveals Strong Candidate Genes Modulating the Stress Response during Chicken Domestication." *G3: Genes, Genomes, Genetics* (2016): 1-32. Web. <http://www.g3journal.org/content/early/2016/12/10/g3.116.037721.full.pdf.html>.
- [11] Shini, S., A. Shini, and G.r. Huff. "Effects of chronic and repeated corticosterone administration in rearing chickens on physiology, the onset of lay and egg production of hens." *Physiology Behavior* 98.1-2 (2009): 73-77. Web.

<https://naldc.nal.usda.gov/download/34971/PDF>.

- [12] Chen, Zehua. Statistical methods for QTL mapping. Boca Raton: CRC Press, 2014.
- [13] Kerr, R. J., G. M. Mclachlan, and J. M. Henshall. "Use of the EM al-

gorithm to detect QTL affecting multiple-traits in an across half-sib family analysis." *Genetics Selection Evolution* 37.1 (2005): 83-103. Web. [https://people.smp.uq.edu.au/GeoffMcLachlan/kmh\\_gse05.pdf](https://people.smp.uq.edu.au/GeoffMcLachlan/kmh_gse05.pdf)

## Data Tables and Code

	Control	Corticosterone-Treated
Age(weeks)	Egg Production %	Egg Production %
17	21	5
18	50	22
19	68	44
20	78	65
21	95	88
22	95	90
23	96	91
24	96	93
25	98	95
26	98	92
27	99	93
28	97	84
29	96	84
30	92	78
31	93	83
32	92	80
33	91	79
34	88	74
35	85	71

Figure 5: Egg Production Affected by Corticosterone Datatable

### R/qlt Code

```
# R script for analyzing QTL data in Chickens
# Alexander Adler
# Chicken Stress Hormone QTL dataset
# December 27, 2016

# clean things up
rm(list=ls())
# set working directory
setwd("/Users/aadler/Desktop/RFolder")

# load the QTL library
# NOTE! I first had to INSTALL the library using: install.packages("qtl")
# Now I can use the package qtl
library(qtl)
```

```

# Load the data
chicken <- read.cross("csv", file="Chicken.csv",
genotypes = c("AA","AB","BB"), na.strings = "-", alleles = c("A","B"))
# Use jittermap to move markers apart slightly so my results are better
jittermap(chicken)
# A summary of the cross gives me some basic data
summary(chicken)
# the names function tells me what phenotypes are in this dataset
names(chicken$pheno)
# take a look at my data, make sure it's pretty clean
chicken <- est.rf(chicken)
plot.rf(chicken)
# It's nice to see my genetic map -- all of the horizontal lines are genetic
# markers that have been inserted
plot.map(chicken)
# It's often the case that I have missing data -- plot.missing shows me
# where it is
plot.missing(chicken)

# renames variables for later use
ALD <- chicken$pheno$aldosterone_log2
DHEA <- chicken$pheno$DHEA_log
CORT <- chicken$pheno$cort_response

# histogram of Aldosterone Log phenotype
hist(chicken$pheno$aldosterone_log2, main = "Histogram of Aldosterone Log")
# histogram of DHEA Log phenotype
hist(chicken$pheno$DHEA_log, main = "Histogram of DHEA Log")
# histogram of Corticosterone phenotype
hist(chicken$pheno$cort_response, main = "Histogram of Corticosterone
Response")

# Another diagnostic (qq plots with linear regression lines)...if my data is
# relatively clean, I should get nice 45 degree diagonal lines
qqnorm(ALD, main = "qq plot of Aldosterone Log")
qqline(ALD, main = "qq plot of Aldosterone Log")
qqnorm(DHEA, main = "qq plot of DHEA Log")
qqline(DHEA, main = "qq plot of DHEA Log")

```

```

qqnorm(CORT, main = "qq plot of Corticosterone Response")
qqline(CORT, main = "qq plot of Corticosterone Response")

# Now I'm going to generate a mainscan. First, I calculate what the scan
# should look like, so I'm going to calculate a genetic probability map.
chicken <- calc.genoprob(chicken, step = 2.0, off.end = 0.0, error.prob =
1.0e-4, map.function = "haldane", stepwidth = "fixed" )

# Run a simulated geno probability calculation
chicken <- sim.geno(chicken, step = 2.0, n.draws=32, error.prob = 1.0e-4,
map.function = "haldane", stepwidth = "fixed" )

# Perform the mainscan for the CORT Response QTL
# I'm going to run this Cort Response scan for 100 "permutations"
chicken.scanCORT <- scanone(chicken, pheno.col = 26, model = "normal",
method = "em")
chicken.scanCORT.perm <- scanone(chicken, pheno.col = 26, model = "normal",
method = "em", n.perm = 100)
# plot the CORT response mainscan
plot(chicken.scanCORT, main = "Mainscan of Corticosterone")
# I'm putting threshold lines at 67% confidence, 90% confidence, and 95%
# confidence.
thresh <- summary(chicken.scanCORT.perm, alpha = c(0.33, 0.10, 0.05))
abline(h=thresh[1], col = "blue")
abline(h=thresh[2], col = "red")
abline(h=thresh[3], col = "green")
# I'd like to see a text-based output of my CORT scan
summary(chicken.scanCORT, perm=chicken.scanCORT.perm, lodcolumn = 1,
alpha = 0.05)

# Perform the mainscan for the Aldosterone QTL
# I'm going to run this ALD scan for 100 "permutations"
chicken.scanALD <- scanone(chicken, pheno.col = 78, model = "normal",
method = "em")
chicken.scanALD.perm <- scanone(chicken, pheno.col = 78, model = "normal",
method = "em", n.perm = 100)
# plot the ALD mainscan
plot(chicken.scanALD, main = "Mainscan of Aldosterone")
# I'm putting threshold lines at 67% confidence, 90% confidence, and 95%
# confidence.

```



```

thresh <- summary(chicken.scanALD.perm, alpha = c(0.37, 0.10, 0.05))
abline(h=thresh[1], col = "blue")
abline(h=thresh[2], col = "red")
abline(h=thresh[3], col = "green")
# I'd like to see a text-based output of my ALD scan
summary(chicken.scanALD, perm=chicken.scanALD.perm, lodcolumn = 1,
alpha = 0.05)

# Perform the mainscan for the DHEA QTL
# I'm going to run this DHEA scan for 100 "permutations"
chicken.scanDHEA <- scanone(chicken, pheno.col = 79, model = "normal",
method = "em")
chicken.scanDHEA.perm <- scanone(chicken, pheno.col = 79, model = "normal",
method = "em", n.perm = 100)
# plot the DHEA mainscan
plot(chicken.scanDHEA, main = "Mainscan of DHEA")
# I'm putting threshold lines at 67% confidence, 90% confidence, and 95%
confidence.
thresh <- summary(chicken.scanDHEA.perm, alpha = c(0.37, 0.10, 0.05))
abline(h=thresh[1], col = "blue")
abline(h=thresh[2], col = "red")
abline(h=thresh[3], col = "green")
# I'd like to see a text-based output of my DHEA scan
summary(chicken.scanDHEA, perm=chicken.scanDHEA.perm, lodcolumn = 1,
alpha = 0.05)

# Confidence Interval Plots for CORT
# First CI plot for CORT
CIchr3 <- bayesint(chicken.scanCORT, chr=3, prob=0.95)
plot(chicken.scanCORT, chr=3, lodcolumn = 1, main = "Confidence Interval for
Chr 3: Corticosterone")
lines(x=CIchr3[c(1,3), 2], y=c(0,0), type = "l", col = "green", lwd=4)
CIchr3[c(1,3),2]
# second CI plot for CORT
CIchr7 <- bayesint(chicken.scanCORT, chr=7, prob=0.95)
plot(chicken.scanCORT, chr=7, lodcolumn = 1, main = "Confidence Interval for
Chr 7: Corticosterone")

```

```

lines(x=C1chr7[c(1,3), 2], y=c(0,0), type = "l", col = "green", lwd=4)
C1chr7[c(1,3),2]

# do an effect plot for CORT
par(mfrow=c(1,2))
firstCORTEffect <- find.marker(chicken, chr = 3, pos = 1119)
effectplot(chicken, pheno.col = 26, mname1 = firstCORTEffect, main =
"Effect Plot for Cort: Chr 3")
secondCORTEffect <- find.marker(chicken, chr = 7, pos = 352)
effectplot(chicken, pheno.col = 26, mname1 = secondCORTEffect, main =
"Effect Plot for Cort: Chr 7")

# All done
detach(cross)
#EOF

```

### Mathematica Code

```

eggData = Import["/Users/aadler/Desktop/EggData.csv"];
Grid[eggData, Frame -> All]

eggDataNoLabels = Delete[eggData, 1];
eggDataNoLabels2 = Delete[eggDataNoLabels, 1];
{age, eggProduction, eggProduction2} = Transpose[eggDataNoLabels2];

control = Transpose[{age, eggProduction}];
cortTreated = Transpose[{age, eggProduction2}];
dataplot =
ListLinePlot[{control, cortTreated}, Mesh -> Full,
  AxesLabel -> {Age in weeks, Egg Production Percent}, PlotLabels ->
{Control, Cortisol Treated},
  PlotLabel -> "Egg Production Percent by Age"]

```